



GINGER

ABOUT GINGER

Step aboard GINGER, a 62-foot luxury catamaran designed to deliver unforgettable cruising experiences along Australia's most iconic coastlines. Crafted by Iliad Catamarans and launched in 2024, GINGER seamlessly combines performance, comfort, and sophisticated design for the ultimate charter adventure.

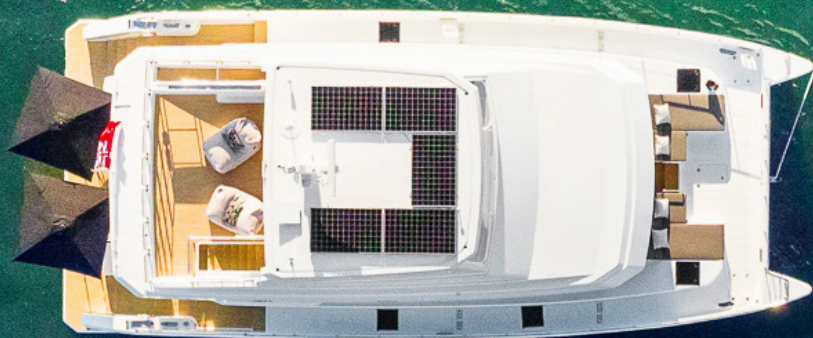
Her expansive layout is perfect for entertaining or relaxing in complete privacy. The open-plan saloon is bathed in natural light, flowing effortlessly onto the aft deck where you can dine alfresco or enjoy sunset cocktails. On the foredeck, a sunken lounge provides a tranquil space to unwind with panoramic ocean views, while the flybridge boasts a full bar, barbecue, and ample seating—making it the ideal spot for entertaining.

Inside, GINGER offers elegant accommodation for up to six guests in three beautifully appointed cabins. The master suite is a sanctuary of luxury, featuring panoramic windows, a spacious ensuite, and direct deck access. Two versatile guest cabins can be configured as queen or twin beds, each with their own private bathroom and thoughtful details for maximum comfort.

For the adventurous, GINGER is equipped with a full suite of water toys including stand-up paddleboards, snorkelling gear, sea scooters, and a kayak. Her hydraulic swim platform ensures easy access to the water for swimming or launching tenders.

Whether you're exploring the pristine waters of the Whitsundays or enjoying a summer's day cruising Sydney Harbour, GINGER's professional crew is dedicated to creating a bespoke experience tailored to your every desire. From gourmet meals to expertly planned itineraries, every detail is designed to exceed your expectations.





BUILD

Iliad



LENGTH

18.95m | 62ft



YEAR

2024

SPECIFICATIONS

VESSEL SPECIFICATIONS

LENGTH	18.95M 62FT	CRUISING SPEED	18 KNOTS
BEAM	8.2M 26.9FT	MAXIMUM SPEED	21 KNOTS
DRAFT	1.5M 4.9FT	REFIT	2024
BUILT	2024, ILIAD	LOCATION	JONES BAY WHARF, SYDNEY

CAPACITY

GUESTS SUITES	3	OVERNIGHT	6
SYDNEY EVENT	20	CABIN LAYOUT	1 x MASTER SUITE 2 x TWIN / DOUBLE CONVERTIBLE CABINS





AFTDECK SEATING



FLY DECK



FLY DECK DINING



MAIN SALOON



MAIN SALOON DINING



BOW



BOW SEATING



MASTER SUITE



TWIN / DOUBLE CABIN



TWIN / DOUBLE CABIN

CHAPMAN



EXPERIENCE YACHTING

ENQUIRE NOW

